

Operating Room Products



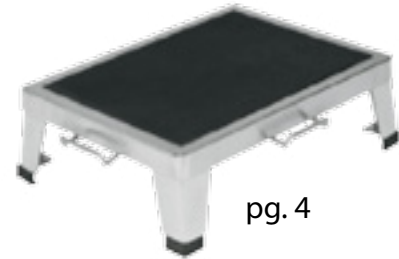
MEDITEK

Here for L.I.F.E.

Welcome



Here for L.I.F.E.



pg. 4

Since 1981, Canadian healthcare facilities have been receiving outstanding customer care in their dealings with Meditek. Patients and front line employees alike appreciate the reliability Meditek offers through superior quality healthcare products and services.

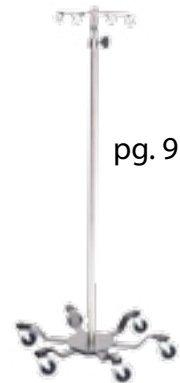
You care about your patients' safety and well-being. Our job is to help you facilitate that care to the highest standard, while exceeding your expectations.

Personalized care and support are the cornerstones of what Meditek is. Coast to coast territory sales managers are ready to assist you in any way they can. With every contact, you will receive their full attention, vast medical products expertise and Meditek's commitment to provide you with a solution that fits your needs.

You know your needs better than anyone. By listening to frontline user input, Meditek has become an established designer, manufacturer and supplier of a wide variety of medical products, from mattresses to stretchers.

Our commitment to providing your team with the equipment they need in today's fast changing environment gives **Here for L.I.F.E.** real meaning!

Leadership. Innovation. Focus. Excellence.



pg. 9



pg. 13

The Meditek Team



pg. 12

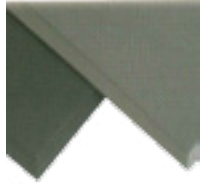


pg. 6

Table of Contents

| | |
|--|-----------|
| Anti Fatigue Mat | 4 |
| Stainless Steel Sponge Receptacles | 4 |
| Stainless Steel Stacking Foot Stool | 4 |
| Stool Transport Cart | 5 |
| Mayo Stands | 5 |
| Instrument/Back Tables | 6 |
| Solution Stands | 8 |
| IV Stands | 9 |
| Utility Tables | 11 |
| Linen Hampers | 12 |
| Stools | 13 |

4 *Operating Room Products*



Antimicrobial Anti-Fatigue Mat | 445-0600-0015

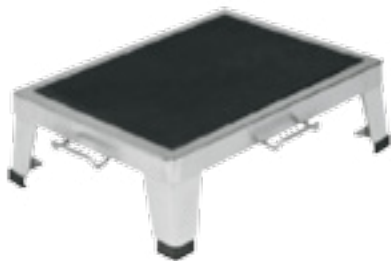
- ✓ Size 24" x 36"

Stainless Steel Sponge Receptacles

- ✓ Stainless steel frame
- ✓ Perimeter bumper to protect walls
- ✓ 2" swivel scuff-resistant casters

445-0400-0000 | 8"H x 16 1/4" diameter with a removable 8.5 quart basin

445-0400-0001 | 14"H x 13 1/2" diameter with a removable 12 quart basin



Stainless Steel Stacking Foot Stool | 445-0900-0000

- ✓ 16 gauge #304 stainless steel, fully welded construction
- ✓ Slip-proof rubber tread on top surface for safety
- ✓ Stools are designed to interlock to create the desired size platform
- ✓ Stools are designed to stack
- ✓ Stool measures 12"D x 18"W x 5"H
- ✓ Tip resistant

Stool Transport Cart | 445-0600-0000

- ✓ Travels on 3" scuff-resistant casters
- ✓ Dimensions 14"D x 21"W x 39" H
- ✓ Designed to carry 4 stools
- ✓ Carry cart provides storage and transportation for stacking interlocking step stools as an all-in-one solution



Hand Operated Stainless Steel Mayo Stands

- ✓ Thumb controlled locking mechanism
- ✓ Extremely sturdy
- ✓ Adjusts from 36"-62"

445-0820-0005 | 12⁵/₈" x 19 ¹/₈" tray

445-0820-0006 | 16 ¹/₄" x 21 ¹/₄" tray

Foot Operated Mayo Stand

- ✓ Removable tray for easy cleaning
- ✓ Foot-pedal operated lock adjusts height from 36"-62"
- ✓ Low profile base design easily slides under equipment
- ✓ 2" double ball bearing casters
- ✓ Brass inserts allow effortless height adjustment
- ✓ Unique "safe descend" feature built in for patient and staff safety

445-0820-0000 | 16¹/₄" x 21 ¹/₄" Tray

445-0820-0001 | 20" x 25" Tray

445-0820-0008 | 12 ⁵/₈" x 19 ¹/₈" Tray



6 *Operating Room Products*

Instrument Table with Shelf

- ✓ Heavy Duty 16 ga. #304 stainless steel
- ✓ 3" ball bearing casters are standard on all tables
- ✓ No open cavities to collect unwanted substances
- ✓ Revealed edge is 1 1/2" to give you the strongest table known
- ✓ Square tube legs allow more welding surface which has proven to outlast any round tube leg



445-0810-0000 | 16"W x 20"L x 34"H

445-0810-0008 | 16"W x 30"L x 34"H

445-0810-0015 | 18"W x 33"L x 34"H

445-0810-0001 | 20"W x 36"L x 34"H

445-0810-0002 | 24"W x 36"L x 34"H

445-0810-0010 | 24"W x 48"L x 34"H

445-0810-0007 | 24"W x 48"L x 34"H

445-0810-0009 | 24"W x 60"L x 34"H

445-0810-0016 | 24"W x 72"L x 34"H

445-0810-0023 | 20"W x 48"L x 34"H

Stainless Steel Instrument/Back Table with H-Brace

- ✓ Heavy Duty 16 ga. #304 stainless steel
- ✓ 3" ball bearing casters are standard on all tables
- ✓ No open cavities to collect unwanted substances
- ✓ Revealed edge is 1 1/2" to give you the strongest table known
- ✓ Reinforcing channels for additional strength to meet the highest expectations
- ✓ Square tube legs allow more welding surface which has proven to outlast any round tube leg

445-0810-0003 | 16"W x 20"L x 34"H

445-0810-0017 | 16"W x 30"L x 34"H

445-0810-0018 | 18"W x 33"L x 34"H

445-0810-0019 | 20"W x 36"L x 34"H

445-0810-0013 | 24"W x 36"L x 34"H

445-0810-0020 | 20"W x 48"L x 34"H

445-0810-0021 | 24"W x 48"L x 34"H

445-0810-0004 | 24"W x 60"L x 34"H

445-0810-0022 | 24"W x 72"L x 34"H



8 *Operating Room Products*

Stainless Steel Single Basin Solution Stands

- ✓ Durable 16 gauge #304 stainless steel construction
- ✓ Large 8 1/2" quart capacity basin
- ✓ Rolls quietly along on 3" scuff-resistant casters
- ✓ Dimensions: 15" x 18" x 34"



Without Shelf | 445-0840-0000

With Shelf | 445-0840-0009

Stainless Steel Double Basin Solution Stands

Without Shelf | 445-0840-0003

With Shelf | 445-0840-0001

- ✓ Dimensions: 15" x 33" x 34"
- ✓ Two large 8 1/2" quart capacity basins
- ✓ Rolls quietly along on 3" scuff-resistant casters
- ✓ Durable 16 gauge #304 stainless steel construction
- ✓ Rubber bumpers around basin stop noise when rolling



Stainless Steel 5-Leg I.V. Stands

445-0300-0002 | 2 hook top

445-0300-0003 | 4 hook top

445-0300-0004 | 6 hook top

- ✓ 16" diameter space saving base
- ✓ Base weighs 21 lbs for unmatched stability
- ✓ Comes with 3" scuff resistant casters
- ✓ Pole sections and detachable top are stainless steel
- ✓ Soft touch "no lose" friction knob adjusts height from 52" - 94"



5-Leg, 22" Diameter "Spider Leg"

445-0300-0005 | 2 hook top

445-0300-0006 | 4 hook top

- ✓ Base weighs 22 pounds and has 3" scuff-resistant casters
- ✓ 1" diameter stainless steel pole adjusts from 50"–92" with "no lose" friction knob.

10 Operating Room Products



24" Diameter 6-Leg Epoxy-Coated Base

445-0300-0007 | 4 hook top

445-0300-0008 | 6 hook top

- ✓ 3" scuff-resistant casters
- ✓ Base design provides added clearance when going over thresholds, etc.
- ✓ 1" diameter stainless steel pole adjusts 52"–94" with "no lose" friction knob
- ✓ Rubber caps on end of legs help protect walls

6 Leg, 24" Diameter "Spider Leg" Design

445-0300-0009 | 4 hook top

445-0300-0010 | 6 hook top

- ✓ Base weighs 23 pounds and comes with 3" scuff-resistant casters.
- ✓ 1" diameter stainless steel pole adjusts 50"–92" with the "no lose" friction knob.



Utility Tables

- ✓ Stainless steel 16 gauge #304 construction
- ✓ Dimensions 16" x 20" x 34"
- ✓ 3-sided guardrail
- ✓ 2 locking, 2 non-locking, 3" casters
- ✓ Drawers are mounted on stainless steel glides
- ✓ Fully welded and polished to meet your expectations
- ✓ No open cavities to collect unwanted substances
- ✓ Custom sizes available upon request

445-0850-0000 | One Drawer



445-0850-0003 | Two Drawers



12 *Operating Room Products*

Linen Hampers

- ✓ Fully-welded, heavy gauge all stainless steel construction
- ✓ 3" double ball bearing, swivel casters
- ✓ Full, heavy gauge stainless steel platform to support bags & ease of removal

445-0200-0005

- ✓ Overall size: 35"H x 18" diameter
- ✓ Accommodates 18" diameter bags



445-0200-0006

- ✓ Overall size: 35"H x 25" diameter
- ✓ Accommodates 25" diameter bags



445-0200-0007

- ✓ Overall size: 35"H x 78 5/8" perimeter
- ✓ Accommodates 25" diameter bags



445-0200-0008

- ✓ Overall size: 35"H x 57 1/4" perimeter
- ✓ Accommodates 18" diameter bags



Five Leg Pneumatic Exam Stool | 445-0700-0001

- ✓ Hands-free height adjustment 360° foot ring control
- ✓ 15" vinyl upholstered seat cushion supported by 3" dense foam padding
- ✓ Five-leg cast aluminum base with Wall Savers™ protects against scuff-marks and offers a textured surface for foot grip
- ✓ Travels on five, 2" single-wheel, hard-rubber casters
- ✓ Choose from 12 upholstery colors



Foot-Operated Pneumatic Stool | 445-0700-0002



- ✓ Height adjustment with a touch of the lever on the Supra Pneumatic™ lift, or select the hands-free adjustment with 360° foot ring control
- ✓ 15" vinyl upholstered seat cushion supported by 3" dense foam padding
- ✓ Five-leg cast aluminum base with Wall Savers™ protects against scuff-marks and offers a textured surface for foot grip
- ✓ Travels on five, 2" twin-wheel, hooded casters roll easily on carpet or floor
- ✓ Height Adjustment: 18 1/2" - 23 1/2"
- ✓ Choose from a wide variety of upholstery colors

Five Leg Pneumatic Hand Operated Exam Stool | 445-0700-0003

- ✓ Height adjustment with the with a touch of the lever on the Supra Pneumatic™ lift
- ✓ 15" vinyl upholstered seat cushion supported by 3" dense foam padding
- ✓ Five-leg cast aluminum base with Wall Savers™ protects against scuff-marks and offers a textured surface for foot grip
- ✓ Travels on five, 2" single-wheel, hard-rubber casters
- ✓ Choose from 12 upholstery colors



14 Operating Room Products



Stainless Steel Stool | 445-0700-0004

- ✓ Adjusts easily by simply turning the 15" diameter seat and is protected from inadvertent removal by a safety stop
- ✓ Polished seat is recessed to accept a vinyl insert or seat pad
- ✓ Circular heel rest and flared legs which are supported on your choice of rubber tips or 2" casters

Stainless Steel Stool | 445-0700-0007

- ✓ 14" round stainless steel contoured seat
- ✓ Stainless steel base with heel rest for added comfort, and three turns per inch screw shaft adjusts height
- ✓ Rubber floor tips
- ✓ Height Adjustment: 20" to 34"



Foot Operated Stool with Backrest | 445-0700-0009

- ✓ Five-leg pneumatic exam stools with 14-1/2" diameter fully padded seat
- ✓ 23" diameter five-caster aluminum base
- ✓ Height adjustable, tilting backrest
- ✓ Height Adjustment: 19 1/4" to 24 1/4"

Company Overview

Meditek – Canada's Medical Equipment Sales and Service Experts

At the core of our business is a commitment to being there for you for L.I.F.E. — delivering leadership, innovation, focus and excellence in everything we do. With local sales representatives in all major markets from coast to coast, we are available to provide on-the-ground support that helps you make the most of everything we sell. Meditek is a Winnipeg-based medical equipment company offering nationwide service to hospitals, clinics and other healthcare facilities. We sell and provide support for a wide range of surgical tables, surgical lights, surgical booms and other products by leading manufacturers such as Skytron, Techlem and Biodex.

Over 30 Years of Hospital Equipment Expertise

Faced with shrinking budgets and an ever-pressing need to do more with less, today's healthcare professionals need a hospital equipment supplier that understands their needs and will work to deliver exceptional value. This is Meditek.

Since 1982, our goal at Meditek has been to build long-lasting relationships with Canada's leading hospitals and clinics to facilitate the continued growth and improvement of our country's health infrastructure.

You'll find our products in both acute and primary care facilities throughout the country, from waiting rooms to sophisticated hybrid operating theatres that are wired with the latest imaging and communications equipment. Browse our extensive inventory or call us today to find out how we can help you improve your level of patient care — while reducing your facility's operating costs.

New and Used Sales

With both new and remanufactured medical equipment available, Meditek has a solution to meet your organization's budget. Our remanufactured products have been completely reconditioned through our certified ReNew program, replacing wearable items and adding essential engineering upgrades to restore the unit to like-new condition.

Remanufactured surgical tables and lighting come with a comprehensive two-year warranty on all parts and labour. Get the equipment your organization needs while staying within budget.

Financing and Rentals

New or used hospital equipment is a major expense for any facility. Meditek offers flexible financing plans that work around your unique circumstances, allowing you to obtain the equipment you need to grow without a major outlay of capital.

For short-term equipment needs, rentals of some of our most popular products are available. Contact us for more information on our flexible renting terms.

Service Support and Consulting

From preventative maintenance to repairs, you can count on Meditek to keep your equipment running at peak performance.

You can also take advantage of our consulting services to get the most out of your physical and financial resources — without compromising workflow or patient care. Whether you're a growing hospital or newly opened clinic, our design consulting team can help you better plan your medical equipment expenditure and facility layout.

Find out more about what Meditek can do for you by contacting a local representative today!



Here for L.I.F.E.

Leadership. Innovation. Focus. Excellence.



Cat. No. 07-915